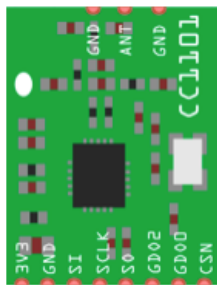


# Watermeter

## Hardware

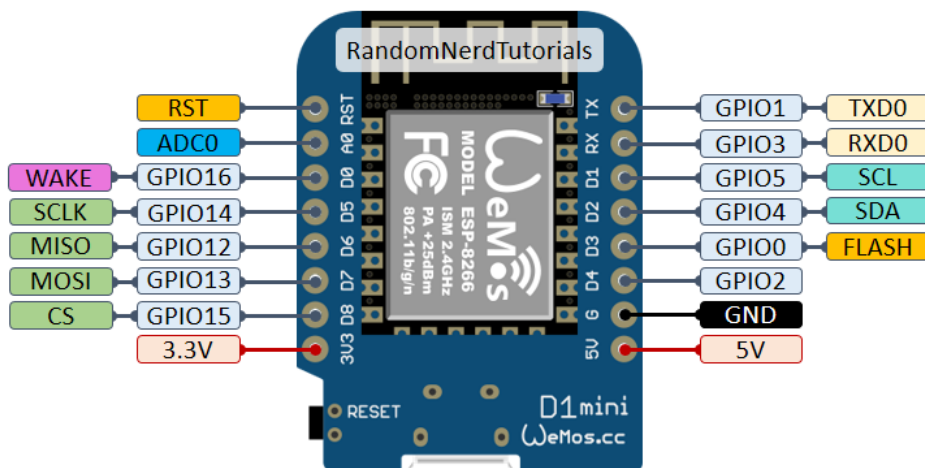
- CC1101 868 MHz Wireless Funk Modul Transciever (z.B. [Amazon](#))
- Wemos D1 mini (z.B. [Amazon](#))
- Diehl IZAR RC 868 I R4 PL Watermeter

## Hardware Setup



CC1101

PIN 1	PIN 2	PIN 2	PIN 4	PIN 5	PIN 6	PIN 7	PIN 8	Board
CSN	GDO0	GDO2	MISO	CLK	MOSI	GND	3.3V	D1 MINI 32 (320 KB RAM)
GPIO5	GPIO21	GPIO22	GPIO23	GPIO18	GPIO19	GND	3.3V	
GPIO15	GPIO4	GPIO5	GPIO12	GPIO14	GPIO13	GND	3.3V	D1 MINI 8286 (80 KB RAM)
GPIO05	GPIO16	GPIO17	GPIO19	GPIO18	GPIO23	GND	3.3V	ESP 32 V4 (520KB RAM)
GPIO15	GPIO05	GPIO04	GPIO12	GPIO14	GPIO13	GND	3.3V	NODEMCU V3 (80KB RAM)



## Configuration

[esphome-watmeter.yaml](#)

together with secrets:

- wifi\_ssid
- wifi\_password
- fallback\_hotspot\_password

- watermeter\_id

## Sources

- Image 1: <https://randomnerdtutorials.com/esp8266-pinout-reference-gpios/>
  - Image 2 and Code: <https://github.com/zibous/ha-watermeter>
- 

Revision #1

Created 9 August 2023 18:59:14 by Andreas Greiner

Updated 9 August 2023 19:11:39 by Andreas Greiner